

REV.	DESCRIPTION	DRAWN	CHECKED	APPROVED
A	NEW RELEASE	LL 10/29/06'		LJC 10/29/06'
B	DRAWING UPDATE	JLZ 06/14/16'		

NOTES:

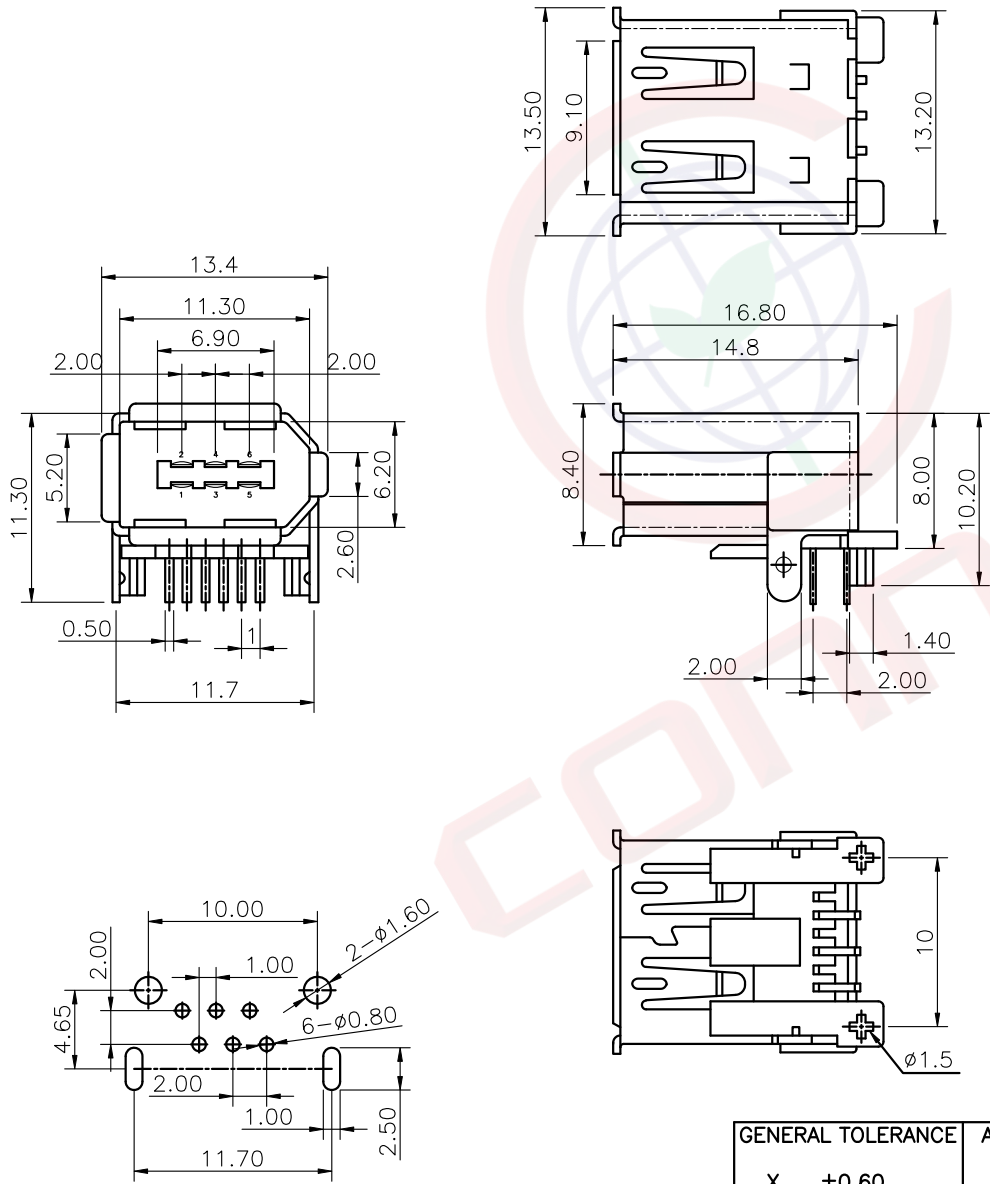
1. SPECIFICATIONS

- . Contact Resistance: 50mΩ max
- . Insulator Resistance: 100MΩ min.
- . Current Rating: 1.5 A.
- . Rated Voltage: 30V DC
- . Dielectric withstanding voltage: AC 100V For 1 minute
- . Contact: Copper Alloy
- . Housing: Thermoplastic(UL 94V-0)
- . Shell: Copper Alloy or Steel

2. PRODUCT NUMBER CODE:

DS1101 - X X X - X

- Shell Material  
Fe: Steel  
N/A: Copper Alloy
- Contact plating  
C: Selective 3u" gold
- Shell plating  
N: Nickel  
6: Tin
- Color of housing  
B: Black



RECOMMEND P.C.B LAYOUT(TOLERANCE±0.05)

GENERAL TOLERANCE		ANGLE TOLERANCE		PROJECTION		TITLE
X. ±0.60	.X ±0.38	.X ±5°	.X ±3°	UNITS	mm	IEEE 1394 Female 6PIN R/A TYPE
.XX ±0.25		.XX ±2°		SHEET SIZE	A4	SERIES DS1101 SERIES
DRAWING TYPE		CUSTOMER		晨翔电子有限公司 <b>CONFLY CONFLY ELECTRONIC CO. LTD</b>		
SCALE		1:1 SHEET 1 OF 1				
DRAWING NO.		C-DS1101-XXX-X-B				