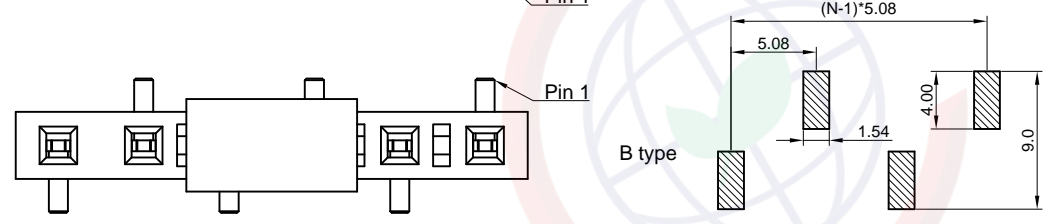
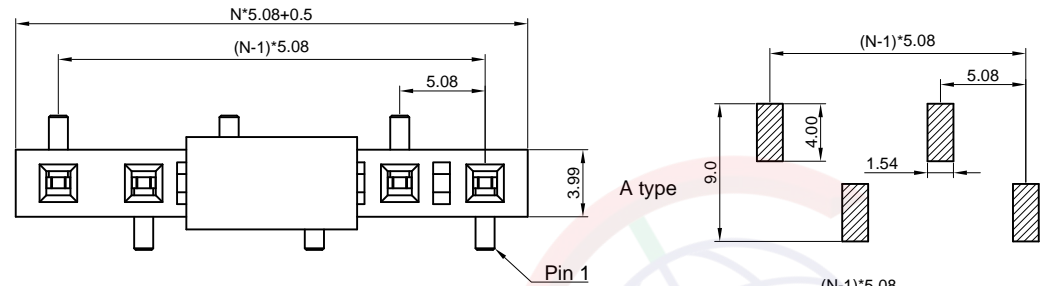


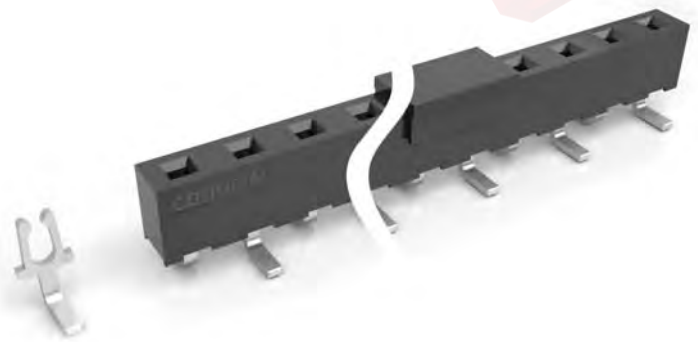
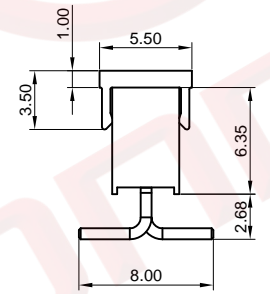
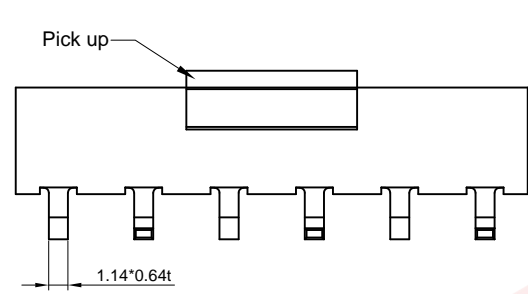
Dept	
Qty	
DC	1
ED	1
IE	1
ISO	1
PD	1
R&D	1
SD	1
QA	1
QC	1
QE	1

The information provided herein is from CONNELY Electronic Co., Ltd. and is confidential. Any disclosure to a party other than the recipient is prohibited. The intellectual properties and its rights contained herein, including but not limited to, trademarks, patents, copyrights, trade secrets, and technical know-how, are owned exclusively by CONNELY or its affiliates. Unauthorized use or reproduction of any part of this document is strictly prohibited. CONNELY reserves the right to make changes to this document without notice and to exercise such rights at its own discretion, failures or delays in exercising such rights does not constitute a waiver of such rights.

N: Number of contacts



Recommend PCB layout  
(Tolerance: ±0.05)



(Series Image-Reference Only)

REV.	DESCRIPTION	DRAWN	CHECKED	APPROVED
A	NEW RELEASE	YCH 01/24/08'		LJC 01/24/08'
B	DRAWING UPDATE	JLZ 02/21/16'	HZW 02/21/16'	LJC 02/21/16'
C	DRAWING UPDATE	JLZ 04/23/19'		

Notes:

Specifications:

- Contact Resistance: 20mΩ Max.
- Insulation Resistance: 1000MΩ Min.
- Dielectric Withstanding Voltage: 1000V AC(rms) For 1 Minute.
- Current Rating: 7A.
- Temperature: -40°C~+105°C.

Materials:

- Contact Material: Copper Alloy.
- Contact Plating: Gold or Tin Plating Over Nickel.
- Insulator Material: High temp, Black, UL94-V0.

Product Number Code:

DS1024-11 - X X X X X

- Packing Type  
T: Tray  
R: Tape On Reel  
B: Tube
- Pick Up Support  
S: W/  
X: W/O
- Bend Type  
A: A Type  
B: B Type
- Contact Plating  
8: Full Glod Flash  
6: Full Tin Flash
- Housing Color  
B: Black
- No. of Contacts  
1x2 - 1x20

GENERAL TOLERANCE		ANGLE TOLERANCE		PROJECTION		TITLE	5.08mm Female Header	
X.	±0.60	X.	±5°	UNITS	mm	SMT Type H=6.35mm		
.X	±0.38	.X	±3°	SHEET SIZE	A4	SERIES	DS1024-11 SERIES	
.XX	±0.25	.XX	±2°	<b>晨翔电子有限公司</b> <b>CONNFLY CONNELY ELECTRONIC CO. LTD</b>				
DRAWING TYPE		CUSTOMER						
SCALE		1:1						
DRAWING NO.		C-DS1024-11-XXXXX-C						