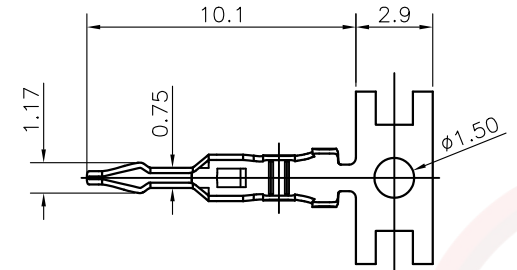


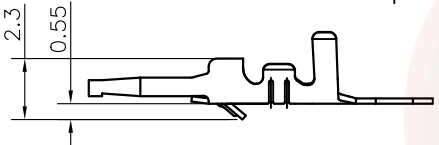
The information provided herein is from CONNELY Electronic Co., Ltd. and is confidential. Any disclosure to a party other than the recipient is prohibited. The intellectual properties and its rights contained herein, including but not limited to, trademarks, patents, copyrights, trade secrets, and technical know-how, are owned exclusively by CONNELY or its affiliates. Unauthorized use or reproduction of any part of this document is strictly prohibited. CONNELY may enforce its intellectual property rights at its own discretion, failures or delays to exercise such rights does not constitute a waiver of such rights.

Female TERMINAL

Female Terminal



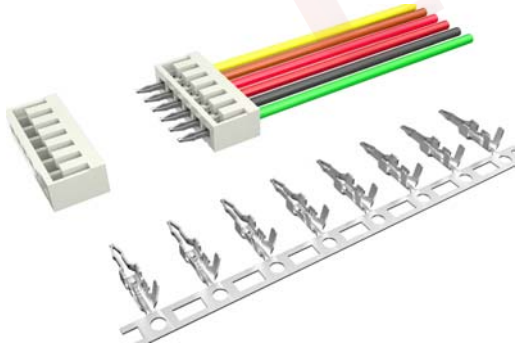
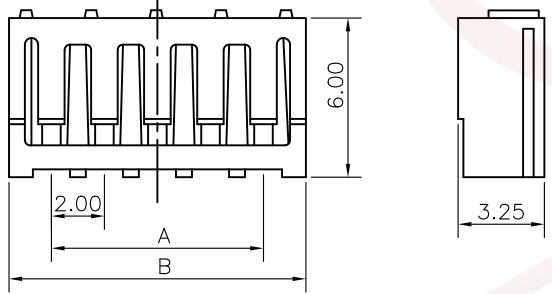
Wire Range		O.D of Wire
Section Area (mm <sup>2</sup> )	AWG#	mm
0.05~0.22	30~24	0.9~1.3



Female HOUSING

Position	DIMENSION	
	A	B
2	2.0	5.2
3	4.0	7.2
4	6.0	9.2
5	8.0	11.2
6	10.0	13.2
7	12.0	15.2
8	14.0	17.2
9	16.0	19.2
10	18.0	21.2
11	20.0	23.2
12	22.0	25.2
13	24.0	27.2
14	26.0	29.2
15	28.0	31.2

Female Housing



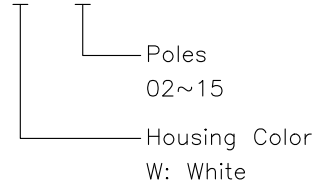
(Series Image-Reference Only)

REV.	DESCRIPTION	DRAWN	CHECKED	APPROVED
A	NEW RELEASE	LJH 06/28/05'		
B	DRAWING UPDATE	JLZ 03/03/23'		

NOTES:

- Main specifications
  - Housing material: Nylon 66
  - Rated voltage: 250V
  - Rated current: 1.0A
  - Contact resistance: ≤ 30mΩ
  - Insulation resistance: ≥ 1000MΩ
  - Withstanding voltage: 500V, AC 1 minute
  - Temperature range: -25 ~ +85°C
  - Recommend PC board thickness: 1.6mm
- Product number code:

Female Housing:  
I-DS1067 - S C X 0 X



Female Terminal:

T - DS1067 - S C 6 0 0

Plating Type:  
6: Tin

GENERAL TOLERANCE		ANGLE TOLERANCE		PROJECTION		TITLE	
X.	±0.60	X.	±5°	UNITS	mm	PCB CONNECTOR 2.0mm TYPE	
.X	±0.38	.X	±3°	SHEET SIZE	A4	SERIES	DS1067 SERIES
.XX	±0.25	.XX	±2°	<b>晨翔电子有限公司</b> <b>CONNFLY CONNFLY ELECTRONIC CO. LTD</b>			
DRAWING TYPE		CUSTOMER					
SCALE	1:1	SHEET	1 OF 1				
DRAWING NO.		C-DS1067-XXXXX-B					