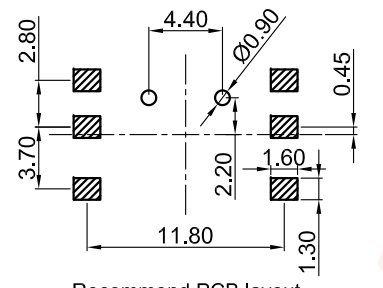
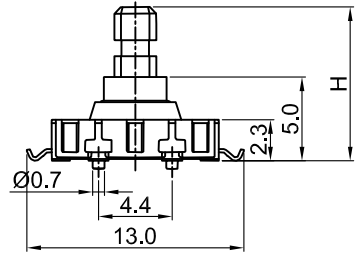
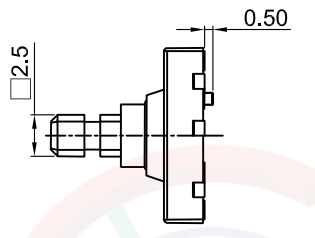
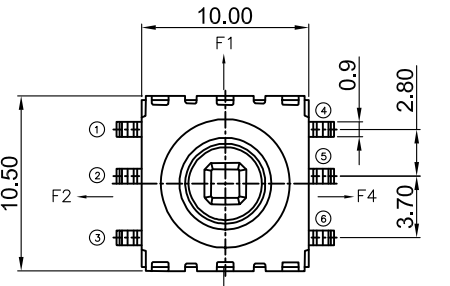


The information provided herein is from CONNLY Electronic Co., Ltd. and is confidential. Any disclosure to a party other than the recipient is prohibited. The intellectual properties and its rights contained herein, including but not limited to, trademarks, patents, copyrights, trade secrets, and technical know-how, are owned exclusively by CONNLY or its affiliates. Unauthorized use or modification is strictly prohibited. CONNLY may enforce its intellectual property rights at its own discretion; failures or delays to exercise such rights does not constitute a waiver of such rights.

1 2 3 4 5 6 7 8

Dept	Qty
DC	1
ED	1
IE	1
ISO	1
PD	1
R&D	1
SD	1
QA	1
QC	1
QE	1

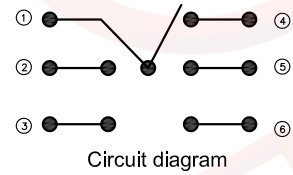


Recommend PCB layout
Tolerance:±0.05



(Series Image-Reference Only)

	①	②	③	④	⑤	⑥
F1	○			○		
F2	○	○				
F3	○				○	
F4	○			○		
F5	○	○				



REV.	DESCRIPTION	DRAWN	CHECKED	APPROVED
A	NEW RELEASE	JLZ 05/12/18'		

NOTES:

- Specifications:
 - Contact Rating: 50mA at 12V DC
 - Insulation Resistance:100MΩ min.
 - Contact Resistance:80mΩ max.
 - Dielectric Withstanding Voltage: 250V AC(rms) for 1 minute.
 - Operating Life:50,000 cycles
 - Travel:0.2±0.1mm
 - Operation Temperature Range: -30°C to +85°C
 - Wave Soldering: Recommended Solder Temperature at 500°F(260°C)max. 5 Seconds
 - Hand Soldering: Use Soldering Iron Of 30 Watts,Controlled at 608°F(320°C) Approximately 2 Seconds.
- Product number code:

DS1042-22 - X X X X X X X

- Operating Life 05:50,000 cycles
- Operating force 250: 250±50gf
- Packing type A: polybag R: Tape on reel
- Actuator color B: Black
- Housing color B: Black
- Profile Height(DIM. H) 090:9.0mm
- No. of contacts 6: 6Pos

GENERAL TOLERANCE		ANGLE TOLERANCE		PROJECTION		TITLE	10.0*10.5mm
X.	±0.60	X.	±5°	UNITS	mm	Multifunctional Switch SMT Type	
.X	±0.38	.X	±3°	SHEET SIZE	A4	SERIES	DS1042-22 SERIES
.XX	±0.25	.XX	±2°	晨翔电子有限公司 CONNFLY CONNFLY ELECTRONIC CO. LTD			
DRAWING TYPE		CUSTOMER					
SCALE		1:1	SHEET 1 OF 1				
DRAWING NO.		C-DS1042-22-XXXXX-A					

1 2 3 4 5 6 7 8