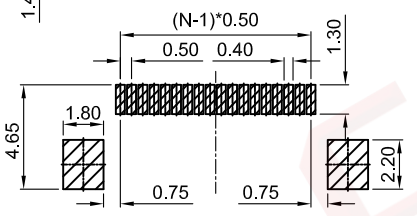
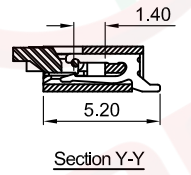
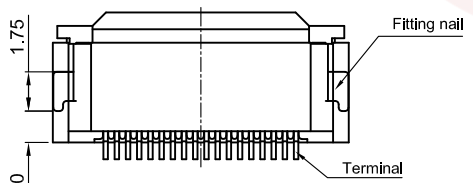
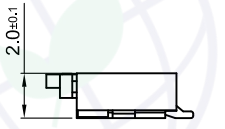
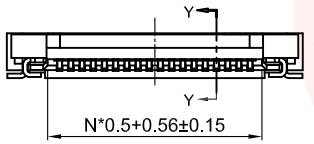
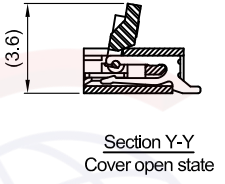
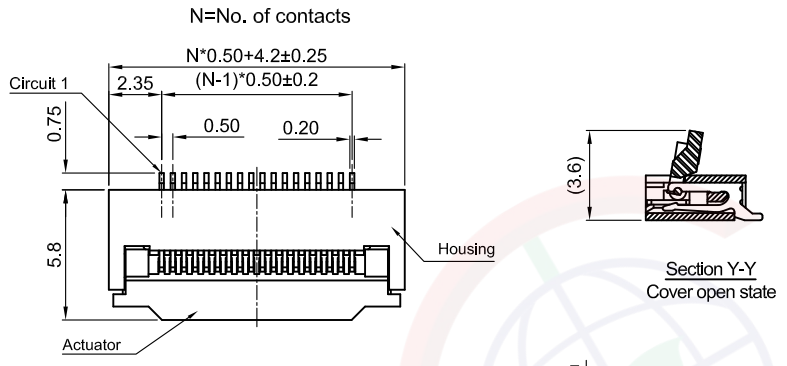


The information provided herein is from CONNELY Electronic Co., Ltd. and is confidential. Any disclosure to a party other than the recipient is prohibited. The intellectual properties and its rights contained herein, including but not limited to, trademarks, patents, copyrights, trade secrets, and technical know-how, are owned exclusively by CONNELY or its affiliates. Unauthorized use of this information in any format or manner. CONNELY may enforce its intellectual property rights at its own discretion; failures or delays to exercise such rights does not constitute a waiver of such rights.

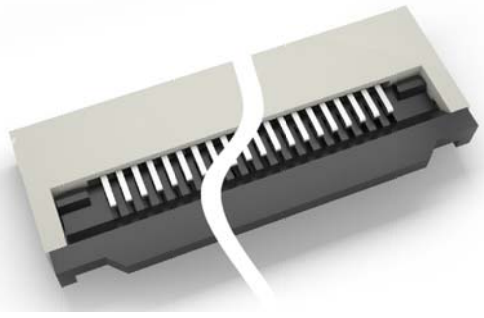
1 2 3 4 5 6 7 8

Dept	Qty
DC	1
ED	1
IE	1
ISO	1
PD	1
R&D	1
SD	1
QA	1
QC	1
QE	1

REV.	DESCRIPTION	DRAWN	CHECKED	APPROVED
A	NEW RELEASE	YCH 03/25/09'	~	LJC 03/25/09'
B	DRAWING UPDATE	JLZ 06/19/20'	~	
C	DRAWING UPDATE	JLZ 10/23/21'	~	
D	Delete Mylar	JLZ 07/19/24'	~	



Recommend PCB layout
(Tolerance:±0.05)



(Series Image-Reference Only)

NOTES:

- Materials
 - 1.1 Insulator:Thermoplastic(UL 94V-0).
 - 1.2 Contact: Copper alloy.
- Specification
 - 2.1 Temperature:-20~+85°C.
 - 2.2 Contact resistance:30mΩ max.
 - 2.3 Insulation resistance:100MΩ min.
 - 2.4 Dielectric withstanding voltage:AC 100V per minute.

3. Product number code:

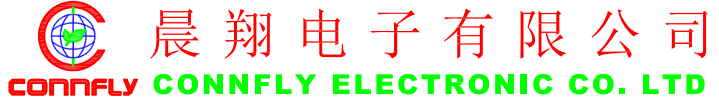
DS1020-11- X X X X X

- Packing type
R: Tape on reel
B: Tube
- Mylar support
X: W/O Mylar
- Contact plating
T1: Full tin
8: Full gold flash
- Cover color
B: Black
- Housing color
V: Ivory
- No. of contacts
04~60

GENERAL TOLERANCE	ANGLE TOLERANCE
X. ±0.60	X. ±5°
.X ±0.38	.X ±3°
.XX ±0.25	.XX ±2°

PROJECTION		TITLE	0.5mm FPC
UNITS	mm		ZIF SMT Type
SHEET SIZE	A4	SERIES	DS1020-11 SERIES

DRAWING TYPE	CUSTOMER		
SCALE	1:1	SHEET	1 OF 1
DRAWING NO.	C-DS1020-11-XXXXXX-D		



1 2 3 4 5 6 7 8