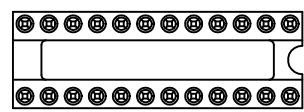


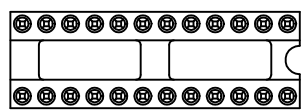
The information provided herein is from CONNELY Electronic Co., Ltd. and is confidential. Any disclosure to a party other than the recipient is prohibited. The intellectual properties and its rights contained herein, including but not limited to, trademarks, patents, copyrights, trade secrets, and technical know-how, are owned exclusively by CONNELY or its affiliates. Unauthorized use, reproduction, or distribution of this information is strictly prohibited. CONNELY reserves the right to modify the product specifications and drawings without prior notice. CONNELY may enforce its intellectual property rights at its own discretion, failures of which does not constitute a waiver of such rights.

Dept	1	2	3	4	5	6	7	8
Qty								
DC	1							
ED	1							
IE	1							
ISO	1							
PD	1							
R&D	1							
SD	1							
QA	1							
QC	1							
QE	1							

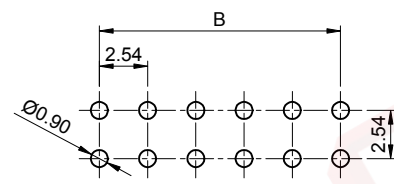
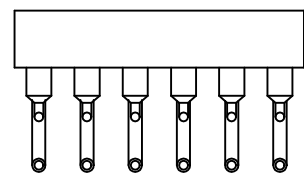
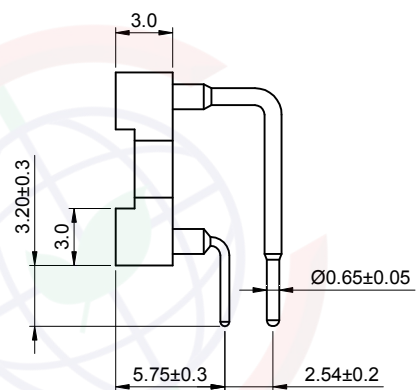
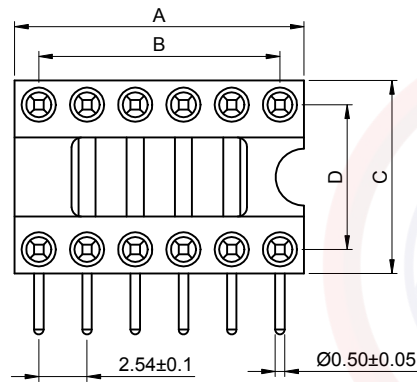
REV.	DESCRIPTION	DRAWN	CHECKED	APPROVED
A	NEW RELEASE	JLZ 05/26/16'		LJC 05/26/16'
B	DRAWING UPDATE	JLZ 07/21/18'		



X: W/O Central support



S: W/ Central support



Recommend PCB layout
Tolerance=±0.05



(Series Image-Reference Only)

Positions	Dimension			
	A±0.5	B±0.3	C	D±0.2
06	7.62	5.08	10.16	7.62
08	10.16	7.62	10.16	7.62
10	12.70	10.16	10.16	7.62
12	15.24	12.70	10.16	7.62
14	17.78	15.24	10.16	7.62
16	20.32	17.78	10.16	7.62
18	22.86	20.32	10.16	7.62
20	25.40	22.86	10.16	7.62
24	30.48	27.94	10.16	7.62
28	35.56	33.02	10.16	7.62
24	30.48	27.94	17.78	15.24
28	35.56	33.02	17.78	15.24
32	40.64	38.10	17.78	15.24
40	50.80	48.26	17.78	15.24

NOTES:

- Materials:
 - Insulator: Thomerplastic,UL94-V0,Black.
 - Pin: Copper Alloy, Plating Tin .
 - Clip: Beryllium Copper,plating Gold.
- Performance:
 - Contact resistance: 20mΩ Max.
 - Dielectric withstanding voltage: 500V AC/60s.
 - Insulation resistance: 1000MΩ Min.
 - Current rating: 1A.
 - Voltage rating: 30V AC/DC.
 - Temperature range: -40~+105°C.
- Product number code:

DS1001-04 - X X X X X X X

- Central support
- S: W/ Central support
- X: W/O Central support
- Clip plating
- F6: Full gold flash
- Housing material
- S: PPS
- Width
- N: 7.62mm(06-24P)
- W: 15.24mm(24-40P)
- Pin plating
- T1: Full tin
- 8: Full gold flash
- Clip type
- B: 4 Fingers
- No.of contacts
- 06 08 10 12 14 16
- 18 20 24 28 32 40

GENERAL TOLERANCE	ANGLE TOLERANCE	PROJECTION		TITLE	IC SOCKET PITCH 2.54mm RIGHT ANGLE TYPE	
X. ±0.60	X. ±5°	UNITS	mm	SHEET	DS1001-04 SERIES	
.X ±0.38	.X ±3°	SHEET SIZE	A4	SERIES	DS1001-04 SERIES	
.XX ±0.25	.XX ±2°	晨翔电子有限公司 CONNFLY CONNELY ELECTRONIC CO. LTD				
DRAWING TYPE	CUSTOMER					
SCALE	1:1 SHEET 1 OF 1					
DRAWING NO.	C-DS1001-04-XXXX-B					